



## Quick Reference Guide

### Nortel's Converged Data Networking Portfolio

#### Introduction to Nortel's enterprise data portfolio

Nortel offers one of the most comprehensive enterprise data networking portfolios in the industry, covering everything from Ethernet switching to mobility to security. Our data networking strategy is based on “[Business Optimized Networks](#)”. The premise behind Business Optimized Networks is to deliver an end-to-end infrastructure that is simple, optimized for business applications and, most importantly, aligned to our customers’ overall business priorities, whether that includes improving customer service, increasing competitiveness or reducing costs.

The products Nortel offers as part of its Business Optimized Network implementation include:

- › [Ethernet routing switches](#), which span from the wiring closet to the large campus core
- › [Branch office converged routing platforms](#)
- › [Wireless LAN/mobility solutions](#)
- › [Application switches and optimization solutions](#)
- › [Security solutions](#)
- › [Management solutions](#)

Third-party vendors have verified that Nortel's data portfolio can deliver superior resiliency, performance and reduced total cost of ownership:

- › [Up to 7x improved resiliency](#). In failure scenarios, Nortel has been shown to recover up to 7x faster than competitive offerings due to innovations such as Switch Clustering/Split Multilink Trunking.
- › [Up to 20x increased performance](#). Tests conducted by Tolly demonstrate that when Nortel data products are stacked up against the leading competitor they can deliver performance increases up to 20x.
- › [Up to 50% reduction in Cost of Ownership](#)
  - Up to 50% lower on CAPEX and lower Maintenance

- › [Up to 40% less energy consumption](#). Recent third-party testing (Tolly) results showed that users pay up to 40% less in electricity costs to operate a Nortel network than a comparable network from the industry leader.

Nortel data products are also optimized for the transition to [unified communications](#). In addition to working with Microsoft to integrate key pieces of technology (i.e., Mediation Server and Microsoft NAP) into the Nortel data portfolio, Nortel data products have been thoroughly tested with Nortel and Microsoft call servers and verified to deliver *toll-quality voice/unified communications* through load balancing and sub-second recovery and intelligent Quality of Service (QoS).



## Nortel Ethernet Routing Switches

The Nortel Ethernet Routing Switch portfolio includes a broad collection of Ethernet switching products designed to deliver secure Layer 2- and 3-connectivity for converged networks. With 10-Gigabit Ethernet uplinks on the stackable products and high-density 10-Gigabit Ethernet aggregation ports on the modular products, the ERS portfolio offers the flexibility and performance to cost effectively deploy next-generation technology, today.

### Did you know...

- › Nortel's Ethernet Routing Switch architecture recovers up to 7x faster than the leading competitor's product.
- › You can buy three ERS 2500s for the price of one Cisco Catalyst 2960.
- › You can add a new ERS unit to an operational stack in 72% less time than it takes to add a Cisco Catalyst 3750G.
- › ERS 4548GT-PWR offers a cost-per-Gigabit of throughput that is almost 72% lower than the Cisco 3750G, and 46% lower than the 3650G-48PS.



**Ethernet Routing Switch 4500 Series**

Product	Features and benefits
<p><b>Ethernet Routing Switch 2500 Series</b></p> <p>The Ethernet Routing Switch 2500 Series is a family of cost-effective 10/100BaseT Ethernet switching products that provide a low-cost yet feature-rich solution in the wiring closet.</p>	<ul style="list-style-type: none"> <li>• High-density, flexible and scalable connectivity, supporting up to 384 user ports per 8-unit stack</li> <li>• Convergence-ready platform enabling simplified end-to-end deployments of voice, video and data on the same infrastructure</li> <li>• Enterprise-class management and a common industry look and feel with other members of the Nortel fixed configuration switching portfolio</li> <li>• Offers high levels of security, ensuring that only authorized personnel gain access to a company's LAN</li> </ul>
<p><b>Ethernet Routing Switch 4500 Series</b></p> <p>The Ethernet Routing Switch 4500 Series offers a secure, reliable and economically priced desktop networking family that supports Fast Ethernet, Gigabit Ethernet or a combination of both in a single stack.</p>	<ul style="list-style-type: none"> <li>• High performance switch architecture and stacking performance delivering 320Gbps</li> <li>• High-density 10/100 or 10/100/1000 ports for edge connectivity</li> <li>• 10 Gigabit as well as shared SFP uplinks ports for high-speed connectivity back to the core or aggregation point</li> <li>• Simplified converged network deployments through support for Power over Ethernet (PoE), advanced Quality of Service (QoS), and auto-configuration of ports with IP Handsets</li> </ul>
<p><b>Ethernet Routing Switch 5000 Series</b></p> <p>The Nortel Ethernet Routing Switch 5000 Series includes stackable 10/100/1000 and 10-Gigabit Layer 3 Ethernet Routing Switches designed to provide high-performance desktop connectivity for medium to large enterprises' wiring closets.</p>	<ul style="list-style-type: none"> <li>• Flexible and scalable solution that can be deployed at the edge or core of the network or as an aggregation switch</li> <li>• Ideal solution for Gigabit to the desktop and for top-of-rack data center deployments; supports 10 Gbps for uplink connectivity at the aggregation or core of the network</li> <li>• Simplified converged network deployments through support for Power over Ethernet (PoE), advanced QoS and auto-configuration of ports with IP handsets</li> <li>• Ability to mix and match with other ERS 5000 Series products in the same intelligent stack; includes support for Nortel's Switch Clustering technology</li> </ul>
<p><b>Ethernet Routing Switch 8300 Series</b></p> <p>The Nortel Ethernet Routing Switch 8300 is a cost-effective, PoE-enabled, modular Layer 3 Ethernet routing switch that delivers high-density 10/100/1000 and 10-Gigabit Ethernet connectivity as an access switch or mid-tier core switch.</p>	<ul style="list-style-type: none"> <li>• High-performance 464 Gbps of switching capacity</li> <li>• Simplified converged network deployments through support for Power over Ethernet, advanced QoS and auto-configuration of ports with IP handsets</li> <li>• Resiliency through features such as Switch Clustering (SMLT) and VRRP</li> <li>• Advanced routing capabilities</li> </ul>
<p><b>Ethernet Routing Switch 8600 Series</b></p> <p>The Ethernet Routing Switch 8600 combines Terabit performance with Nortel's unique reliability technologies to create the basis of a Resilient Terabit cluster solution and provide enterprises with a truly unified communications network.</p>	<ul style="list-style-type: none"> <li>• 1.440 Terabit Switch Cluster Architecture with support for 240 non-blocking Gigabit Ethernet ports and 24 non-blocking 10 Gigabit Ethernet ports</li> <li>• SMLT and RSMLT ensure maximum uptime to increase employee productivity and efficiency</li> <li>• Integrated security with support for thousands access control lists and built-in firewalls provides end-to-end data integrity and control</li> <li>• Half a million route entries for full Internet route support provides scalability in routing applications</li> </ul>

## Nortel Branch Office Converged Routing Solutions

Optimized for regional sites, branch offices and remote locations, Secure Routers offer the lowest latency and highest throughput for VoIP and other multimedia traffic. With up to 4x the performance throughput of equivalent offerings, the Secure Router portfolio allows for better utilization of WAN bandwidth — and at a price that is up to 50% lower than the competition.

### Did you know...

- › The Secure Router portfolio delivers 4.5x the performance throughput for up to 50% less cost than the leading competitor.
- › Secure Routers are proven technology with an eight-year-old comprehensive code base and a significant installed base of customers.
- › Secure Router 4134 is one of the only devices of its kind to integrate Microsoft's Mediation Technology — a key piece of every Microsoft Office Communicator 2007 deployment.
- › Secure Router 4134 can act as a remote branch office voice gateway for your Nortel/Microsoft Unified Communications deployment.

Product	Features and benefits
<p><b>Secure Router 1000 Series</b> Secure Router 1000 Series products are fixed-configuration platforms optimized for a single serial/T1/E1 dual T1/E1s or quad T1/E1s. Small, fast, and optimized for multiservice converged environments, these products offer tremendous value.</p>	<ul style="list-style-type: none"> <li>• Delivers wire-speed performance regardless of packet size, traffic load or services enabled</li> <li>• Toll-quality voice transport under load with advanced services enabled</li> <li>• Industry-aligned command-line interface to ease configuration and management</li> <li>• Voice over IP friendly security with seamless interworking with Nortel Call Servers</li> </ul>
<p><b>Secure Router 3120</b> Secure Router 3120 is a powerful 2-slot modular platform that scales up to 2xDS3 or 16x T1/E1s. Delivering fast, secure and reliable connectivity. Secure Router 3120 is perfect for enterprise branch offices and/or regional sites.</p>	<ul style="list-style-type: none"> <li>• One of the only routers in its class to offer Channelized T3 for cost effective T1 aggregation</li> <li>• Delivers wire-speed performance regardless of packet-size traffic load or services enabled</li> <li>• Toll-quality voice transport under load with advanced services enabled</li> <li>• Industry-aligned command-line interface to ease configuration and management</li> <li>• Voice over IP friendly security with seamless interworking with Nortel Call Servers</li> </ul>
<p><b>Secure Router 4134</b> Secure Router 4134 is Nortel's unified branch solution. It consolidates IPv4/IPv6 routing, high-performance WAN, high-density Ethernet switching with optional Power over Ethernet, security, Voice over IP (VoIP) and Microsoft's Mediation Technology.</p>	<ul style="list-style-type: none"> <li>• Only device of its kind to support Microsoft's Mediation Technology, enabling seamless integrated interworking between Microsoft Office Communicator clients, other clients and the PSTN at the branch office</li> <li>• High level of modularity and flexibility supporting up to seven different interface slots</li> <li>• Seamless interworking with Nortel Call Server, including future support for Nortel Communication Server 1000 integration</li> <li>• Industry-aligned command-line interface to ease configuration and management</li> </ul>



Nortel Secure Router 1000 Series



Nortel Secure Router 3120



Nortel Secure Router 4134

## Nortel Wireless LAN Solutions

The Nortel WLAN 2300 Series is a complete 802.11 system for enterprises that want to deploy widespread wireless coverage for today's business, IP Telephony and converged multimedia applications. The system combines the latest industry standards with a centralized architecture and advanced features to create a secure, cost-effective and highly scalable WLAN infrastructure.

### Did you know...

- › Nortel's unique WLAN architecture offers distributed forwarding to allow low-latency seamless roaming.
- › Nortel's WLAN Solutions span the spectrum, from 400 Application Points (APs) distributed across the New York Stock Exchange to a metropolitan-wide deployment of 10,000 wireless mesh APs distributed across the City of Taipei.
- › Nortel has an ecosystem of WiFi partners that include Air Defence, Ekahau and Auro Scout.



Access Point 2330/2332



Security Switch 2350

Product	Features and benefits
<p><b>Access Point 2330</b></p> <p>The WLAN Access Point 2330 is controlled by WLAN 2300 Security Switches and provides multi-mode 802.11 a/b/g service for mobile clients. The 2330 is designed for dense deployments and delivers high-performance mobile connectivity without sacrificing security or manageability.</p>	<ul style="list-style-type: none"> <li>• Self-configuration upon installation</li> <li>• Dual-homed Ethernet ports for service resiliency</li> <li>• Continuous RF scanning to detect unauthorized activity</li> <li>• Priority queuing for voice and multimedia</li> <li>• Hardware-based encryption</li> </ul>
<p><b>Access Point 2332</b></p> <p>The WLAN Access Point 2332 is controlled by WLAN 2300 Security Switches and provides multi-mode 802.11 a/b/g service for mobile clients. The 2332 is designed for dense deployments and delivers high-performance mobile connectivity without sacrificing security or manageability. It provides enhanced RF compared to the 2330.</p>	<ul style="list-style-type: none"> <li>• Self-configuration upon installation</li> <li>• Dual-homed Ethernet ports for service resiliency</li> <li>• Continuous RF scanning to detect unauthorized activity</li> <li>• Priority queuing for voice and multimedia</li> <li>• Wireless backhaul and bridging</li> <li>• Local traffic forwarding</li> </ul>
<p><b>Management Software 2300</b></p> <p>The WLAN Management Software 2300 system is a comprehensive design and management tool for the WLAN 2300 Series. The tool identifies ideal access point locations on detailed floor plans, configures all devices with a single click and provides granular monitoring and reporting for complete visibility and control over the entire system.</p>	<ul style="list-style-type: none"> <li>• An integrated tool suite for pre-, and post-deployment planning, system-wide configuration and upgrades, ongoing monitoring and reporting</li> <li>• Operates on common server platforms including Windows 2000, Windows XP and LINUX</li> <li>• Enables administrators to perform system-wide updates with a single key stroke and view what's happening via a graphical interface</li> <li>• Granular monitoring and customizable reporting provides everything needed to handle troubleshooting and support calls for enterprise-wide converged wireless services</li> </ul>
<p><b>Security Switch 2350</b></p> <p>WLAN Security Switch 2350 is the smallest switch in the 2300 Series and is ideally suited for extending WLAN services to small or branch office environments. It can control up to three access points and offers the same features as the larger 2300 switches but in a smaller package and at a lower price.</p>	<ul style="list-style-type: none"> <li>• WAN link offload and WAN link failure protection for reliable branch office wireless service</li> <li>• "No Touch" configuration and management for sites without local technical expertise</li> <li>• VPN and firewall compatibility for non-disruptive implementations</li> <li>• Wireless threat protection defends against RF attacks</li> <li>• Guest access provisioning provides convenient controlled wireless networking for guests</li> </ul>

— Continued

Product	Features and benefits
<p><b>Security Switch 2360/2361</b> WLAN Security Switch 2360/2361 is ideally suited for mid-size office sites or wiring closet deployments, controlling up to 12 access points either connected directly to one of the eight Ethernet ports or indirectly through a Layer 2 or 3 network.</p>	<ul style="list-style-type: none"> <li>• Wireless threat protection defends against RF attacks</li> <li>• Dynamic RF management with user RF performance optimization ensures a high-quality user experience</li> <li>• Guest access provisioning provides convenient controlled wireless networking for guests</li> <li>• Seamless, fast roaming across access points and switches preserve voice quality</li> </ul>
<p><b>Security Switch 2382</b> WLAN Security Switch 2382 provides control, management and security for up to 128 distributed access points and is designed for centralized deployments in data centers or at network aggregation points. The 2382 provides the flexibility of using closet PoE switches for connectivity and power to the access points.</p>	<ul style="list-style-type: none"> <li>• Flexible licensing tiers support 32, 64, 96 or 128 access points</li> <li>• Wireless threat protection defends against RF attacks</li> <li>• Dynamic RF management with user RF performance optimization ensures a high-quality user experience</li> <li>• Guest access provisioning provides convenient controlled wireless networking for guests</li> <li>• Seamless, fast roaming across access points and switches preserves voice quality</li> <li>• Multi-cast management delivers high-quality video and multimedia</li> <li>• Self-healing, resilient design minimizes service disruption</li> </ul>
<p><b>Location Engine 2340</b> The WLAN Location Engine (WLE) 2340 enhances WLAN 2300 systems with an integrated location services capability. The WLE 2340 locates and tracks mobile clients and enables asset tagging and tracking, zone-based access control and content delivery applications.</p>	<ul style="list-style-type: none"> <li>• Locates and tracks any active WLAN client</li> <li>• Displays locations on floor plans</li> <li>• API provides location information to other applications</li> <li>• Can be calibrated for high-resolution accuracy</li> <li>• Supports Newbury® location applications suite</li> </ul>

## Nortel Wireless LAN Solutions

— *Continued*



**Location Engine 2340**

## Application Switching and Optimization

Nortel Application Switches and Accelerators deliver application availability, performance and security by balancing and accelerating traffic and by giving IT managers control over their network. Nortel Application Switches enable application optimization, delivery, and high availability through the use of sophisticated application load balancing, intelligent traffic management, application-layer security, security acceleration, and bandwidth management. Nortel Application Accelerators improve web-based application response time by as much as 34x and reduce server and bandwidth requirements through TCP optimization and SSL acceleration.

### Did you know...

- › Nortel Application Accelerator can deliver up to 34x improved WAN performance for web applications and is optimized, tested and preconfigured for IBM Websphere, Microsoft Outlook Web Access and SharePoint.
- › Nortel Application Switches have been tested to deliver uninterrupted service to Microsoft LCS/OCS call servers
- › Microsoft LCS/OCS servers can be loadbalanced to other Microsoft servers in the network to achieve faster response, increased reliability and to maintain user sessions in the event of an outage.

Product	Features and benefits
<p><b>Application Accelerator 510</b></p> <p>Nortel Application Accelerator 510 can reduce costs and increase user satisfaction by reducing server and bandwidth needs and improving the responsiveness of web-based applications. It is optimized for up to 4,000 peak users.</p>	<ul style="list-style-type: none"> <li>• Can improve application performance 5 to 34x, and includes profiles optimized and tested for IBM WebSphere, Microsoft Outlook Web Access (OWA) and Microsoft SharePoint</li> <li>• Reduces server load through SSL termination, acceleration and centralized certificate management</li> <li>• Uses delta encoding to compare objects at the byte level to ensure that only changed content is transmitted</li> <li>• Reduces bandwidth needs through the improved performance of the client's local cache</li> </ul>
<p><b>Application Accelerator 610</b></p> <p>Nortel Application Accelerator 610 is ideal for enterprises that plan for more than 4,000 peak users or require the assurance of continuous availability that dual power supplies, hot-swappable fans and dual hard drives deliver.</p>	<ul style="list-style-type: none"> <li>• Can improve application performance by 5 to 34x, and includes profiles optimized and tested for IBM WebSphere, Microsoft Outlook Web Access (OWA) and Microsoft SharePoint</li> <li>• Reduces server load through SSL termination, acceleration and centralized certificate management</li> <li>• Uses delta encoding to compare objects at the byte level to ensure that only changed content is transmitted</li> <li>• Reduces bandwidth needs through the improved performance of the client's local cache</li> </ul>
<p><b>Application Switches</b></p> <p>Nortel Application Switches deliver application availability, performance and security by balancing and accelerating traffic. They integrate routing and switching by forwarding traffic at Layer 2 speed using Layer 4-7 information, and are designed from the ground up to optimize networks for application performance.</p>	<ul style="list-style-type: none"> <li>• Reduces infrastructure costs by allowing resources to be used to their fullest capacity</li> <li>• Provides high availability through instant fail-over when a server, site or WAN link becomes unavailable</li> <li>• Puts IT back in control by identifying and managing application traffic and by providing extensive tools for application identification, prioritization, redirection, rate limiting, and shaping</li> <li>• Secures and accelerates traffic with integrated secure sockets layer (SSL) acceleration, multiplexing and compression</li> </ul>



Application Accelerator 510 and 610

## Nortel Security and VPN Solutions

Nortel uses a Layered Defense approach to network security, designed to ensure there are no single points of security failure in a network. This is accomplished by using multiple approaches to security enforcement at multiple areas within a network, including:

- › **Communications Security** — ensures information protection from unauthorized discovery over the network.
- › **Perimeter Security** — keeps the “good” stuff in and the “bad” stuff out by securing the boundaries between zones of different levels of trust.
- › **Endpoint Security** — ensures valid identity and connected device compliance with security policy.
- › **Core Network Security** — keeps watch for malicious software and traffic anomalies, enforcing network policy and enabling survivability.
- › **Security Management and Platform Security** — manages security solution configuration, policy and event management components.

### Did you know...

- › Nortel embraces an open security philosophy, which is based on an ecosystem that leverages solutions from security technology leaders such as Symantec, Check Point and Sourcefire.
- › Nortel’s Secure Network Access Switch provides integration with Microsoft’s Network Access Protection (NAP) to provide a comprehensive security solution for protecting against internal threats.

Product	Features and benefits
<p><b>VPN Gateway</b></p> <p>VPN Gateway is a remote access security solution that extends the reach of enterprise applications to remote employees, partners and customers. Designed for medium to large enterprises, a single VPN Gateway can support up to 5,000 concurrent SSL and IPsec VPN user connections.</p>	<ul style="list-style-type: none"> <li>• Clientless VPN access eliminates client support and maintenance requirements associated with traditional remote access solutions</li> <li>• Supports multiple VPN access modes (browser only, java applet or full SSL VPN access via Net Direct) and the Nortel VPN Client (IPsec)</li> <li>• Provides VPN acceleration, load balancing and can be clustered in groups of up to 255 units to support highly robust VPN designs.</li> <li>• Provides a suite of security features that enforce endpoint security policies, thus protecting networks from malicious code and preventing loss or theft of confidential information</li> </ul>
<p><b>VPN Router</b></p> <p>The VPN Router portfolio provides VPN, routing, IPsec, SSL, firewall, encryption and authentication services for secure connectivity across IP networks and the Internet.</p>	<ul style="list-style-type: none"> <li>• Cost-effectively extends IP-based remote access to remote locations</li> <li>• Performs as either an IP access router, dedicated VPN device, or firewall in a single unit</li> <li>• Supports dynamic routing and load-balancing for tunneled and non-tunneled traffic, and sophisticated quality-of-service (QoS) and bandwidth management features</li> <li>• Provides flexibility of IPsec, SSL or both to meet all customer requirements</li> </ul>
<p><b>Secure Network Access Switch</b></p> <p>The Secure Network Access Switch acts as a centralized “controller” that delivers unified access policy and network access control (NAC) for wired, wireless and mobile users/devices. It supports 2,500 concurrent users per switch and up to 10,000 users per switch cluster</p>	<ul style="list-style-type: none"> <li>• Designed to inspect, assess, ensure compliance to business security policy, and remediate at the network endpoint source, prior to granting network access</li> <li>• Controls network access by enabling only trusted and privileged access based on users’ identities and the security of their devices</li> <li>• Simplifies access complexity by centrally managing and enforcing access policy for all enterprise user types</li> <li>• Open API integration with leading endpoint security vendors, including Microsoft NAP</li> <li>• Flexible deployment options utilizing single-sign-on installable client for employees and clientless operation for guest access</li> </ul>
<p><b>Threat Protection System</b></p> <p>The Threat Protection System (TPS) is based on Snort, the open source intrusion detection engine. Using Real-Time Network Awareness (RNA) technology to profile assets on the network, TPS provides a comprehensive intrusion detection system while reducing the number of false positives.</p>	<ul style="list-style-type: none"> <li>• Protects networks from zero-day and emerging attacks</li> <li>• Provides queries and reports on network threats</li> <li>• Reduces false positives by providing end-point intelligence to determine the impact of threats.</li> <li>• Enables accurate automation and real-time adaptive defense responses to all threat scenarios across the enterprise through remediation with the Nortel Application Switch, Switched Firewall, Secure Network Access Switch and VPN Gateway</li> </ul>

— Continued

## Nortel Security and VPN Solutions

— Continued

Product	Features and benefits
<p><b>Switched Firewall 5100 Series</b></p> <p>The Nortel Switched Firewall 5100 Series is ideal for deployments at small or medium-sized sites. Based on the Check Point FireWall-1 inspection engine, Switched Firewall provides a resilient, high-performance, high-availability L2/3 firewall solution.</p>	<ul style="list-style-type: none"> <li>• Firewall clustering with single system image for pay-as-you-grow scalability and central management</li> <li>• Integrated with Nortel Threat Protection System to prevent real-time threats and attacks</li> <li>• Deep Packet Inspection with Check Point SmartDefense for extra protection from sophisticated attacks</li> <li>• Support for Nortel VoIP portfolio (e.g., Multimedia Communication Server 5100 and Communication Server 1000)</li> </ul>
<p><b>Switched Firewall 6000 Series</b></p> <p>The Switched Firewall 6000 Series performs accelerated deep-packet inspection and is ideal for large enterprise, data center and service provider L2/3 deployments.</p>	<ul style="list-style-type: none"> <li>• Dual-component switch-based appliance for high-capacity, accelerated and low-latency performance, leveraging Check Point secure XL technology</li> <li>• Hitless upgrade capability for improved resiliency and availability</li> <li>• Firewall clustering with single system image for pay-as-you-grow scalability and central management</li> <li>• Integrated security pack for Advanced Denial of Service protection</li> <li>• Support for Nortel VoIP portfolio (e.g., Multimedia Communication Server 5100 and Communication Server 1000)</li> </ul>



VPN Gateway



Switched Firewall 5100 Series



Secure Network Access Switch



Switched Firewall 6000 Series



Threat Protection System



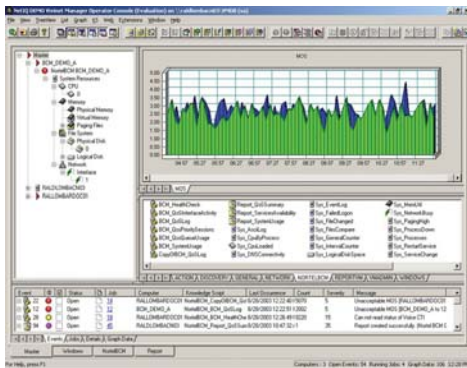
VPN Router

## Nortel Enterprise Data Network and Service Management Solutions

Nortel Enterprise Network and Service Management (ENMS) delivers strategies, solutions, and tools to enable a system-wide, life-cycle management approach, dedicated to delivering converged solutions that reduce the total cost of ownership and enhance the end-user experience.

### Did you know...

- › Nortel can help you address service management issues as your enterprise network transitions to IP telephony and other converged applications.
- › Nortel has tools to assess your network to determine if it is ready to handle IP Telephony, then proactively monitor the experience of your users once deployed.
- › Nortel can help automate configuration, software updates, and backup tasks in order to reduce OPEX.



Product	Features and benefits
<p><b>Nortel Enterprise Network Management System</b></p> <p>Nortel's Enterprise Network Management System helps network administrators identify and resolve problems and performance bottlenecks before they impact network services. It encompasses performance and fault monitoring, central database and asset management, and device discovery and management.</p>	<ul style="list-style-type: none"> <li>• The device inventory manager helps network managers keep a complete inventory of their network devices</li> <li>• Provides powerful navigation tools that enable network managers to move seamlessly between logical and physical topology views with one mouse click</li> <li>• Provides a detailed view of the physical network and logical connections</li> <li>• Provides a monitoring system to help identify network problem location and cause to help improve network performance</li> </ul>
<p><b>Proactive Voice Quality Management (PVQM)</b></p> <p>PVQM continuously measures the user quality of experience for all IP telephony communications, conducts system health checks for IP telephony servers, and provides resolution for performance degradation and fault conditions.</p>	<ul style="list-style-type: none"> <li>• Continuously and passively measures user quality of experience for all IP Telephony communications</li> <li>• Performs health checks for IP Telephony servers</li> <li>• Identifies when performance degrades or faults occur in the network</li> <li>• Enables closed-loop monitoring of a voice call</li> </ul>
<p><b>Nortel Enterprise Policy Manager</b></p> <p>Nortel Enterprise Policy Manager is a single, network-level application that allows administrators to manage network bandwidth, prioritize traffic streams, and set network access policies.</p>	<ul style="list-style-type: none"> <li>• Quickly applies traffic filtering policies from a single console across multiple device types</li> <li>• Prioritizes business-critical traffic flows for effective bandwidth management and QoS</li> <li>• Responds to network threats in minutes</li> <li>• Screens users logging into the network</li> </ul>
<p><b>Enterprise Switch Manager</b></p> <p>Enterprise Switch Manager is a Java™-based, real-time, configuration management application for Nortel Ethernet Routing Switches, Application Switches and WLAN devices.</p>	<ul style="list-style-type: none"> <li>• Simplifies deployment and ongoing configuration management</li> <li>• Improves fail-safe redundancy and ongoing network performance</li> <li>• Backup and restore support with scheduling capability ensures that the network can be recovered</li> <li>• An intuitive GUI for configuration of multicast networks supporting real-time information across multiple sites</li> </ul>
<p><b>Network Resource Manager</b></p> <p>Network Resource Manager is a web-based configuration tool which simplifies key configuration management services for large networks of Secure Routers, Secure Network Access Switches and VPN Routers.</p>	<ul style="list-style-type: none"> <li>• Accelerates device deployment and configuration</li> <li>• Reduces administrator time and effort spent reacting to security incidents and network outages</li> <li>• Allows for higher network uptime by reducing configuration management errors</li> <li>• Improves security with faster response to fix security incidents and reduces security incidents related to manual device misconfigurations</li> </ul>

**In the United States:**

Nortel  
35 Davis Drive  
Research Triangle Park, NC 27709 USA

**In Canada:**

Nortel  
195 The West Mall  
Toronto, Ontario M9C 5K1 Canada

**In Caribbean and Latin America:**

Nortel  
1500 Concorde Terrace  
Sunrise, FL 33323 USA

**In Europe:**

Nortel  
Maidenhead Office Park, Westacott Way  
Maidenhead Berkshire SL6 3QH, UK  
Email: [euroinfo@nortel.com](mailto:euroinfo@nortel.com)

**In Asia:**

Nortel  
United Square  
101 Thomson Road  
Singapore 307591  
Phone: (65) 6287 2877

Nortel is a recognized leader in delivering communications capabilities that make the promise of Business Made Simple a reality for our customers. Our next-generation technologies, for both service provider and enterprise networks, support multimedia and business-critical applications. Nortel's technologies are designed to help eliminate today's barriers to efficiency, speed and performance by simplifying networks and connecting people to the information they need, when they need it. Nortel does business in more than 150 countries around the world. For more information, visit Nortel on the Web at [www.nortel.com](http://www.nortel.com). For the latest Nortel news, visit [www.nortel.com/news](http://www.nortel.com/news).

For more information, contact your Nortel representative, or call 1-800-4 NORTEL or 1-800-466-7835 from anywhere in North America.

Nortel, the Nortel logo, Nortel Business Made Simple and the Globemark are trademarks of Nortel Networks. All other trademarks are the property of their owners.

Copyright © 2008 Nortel Networks. All rights reserved. Information in this document is subject to change without notice. Nortel assumes no responsibility for any errors that may appear in this document.

NN123393-070708



**BUSINESS MADE SIMPLE**