



Avotus Professional for Meridian 1 Helps Cut the Cost of Communicating

Monitor and Manage Your Communication Resources with Avotus. This fully-integrated voice and data network management solution provides quick, easy access to critical information about your infrastructure, and helps Nortel customers reduce costs and increase efficiencies.

communications management and decision making. This sophisticated application helps monitor and control telecom costs for the most complex corporate systems and network configurations by:

- Collecting call records from the Nortel Meridian 1 PBX
- Allocating costs to the appropriate users through flexible costing models
- Generating meaningful, professional-looking and customizable reports
- Offering flexible, multi-level, organizational, hierarchical costing capabilities and powerful database management features

Hospitality Revenue Generator

Avotus Professional Hospitality Revenue Generator is used by hotels, hospitals, colleges and other telecom resellers to maximize profits from telecommunications system usage. Avotus provides tenant billing customers with an affordable, reliable, flexible solution for managing call records through:

- Generation of detailed and summary reports for guest/residents and employee telephone activity
- Direct interface with most Property Management Systems (PMS)
- Customized pricing; allocation of telephone costs to rooms, departments and extensions
- Multiple billing reports imported for various services including non-telecom devices

Avotus Professional is a cost-effective solution that provides Nortel end users with useful facts about their complex and costly communications infrastructure. It shares corporate hierarchy & entity information across all modules allowing the roll-up of costs to departments and corporate cost centers.

AVOTUS PROFESSIONAL MODULE OVERVIEWS

Call Accounting

Avotus Professional Call Accounting is a comprehensive call costing and billing application. With its advanced features, customizable options, optional output formats and user-friendly interface, Avotus Professional provides precise information for effective



Leveraging the strengths of its Developer Partners and their Compatible Products, the Developer Program has become a key contributor in the success of Nortel by broadening its reach and responsiveness in meeting the needs of its channels and customers. Each Nortel Compatible Product has met established requirements for integration, functionality and stability, further reducing total cost of ownership.

- Room surcharging options
- Access to many standard profitability, business and usage reports

Web Reports

Avotus Professional Web Reports offers authorized users access to reporting capabilities over the Internet or your company's Intranet.

Avotus quickly identifies trends so clients can take appropriate action to reduce the risk of expensive misuse of corporate resources.

Reports and graphs are created through browsers using current information. Each report can be sorted and filtered to detail information and facilitate accurate interpretation. Reports can be viewed on screen, printed, saved as files or e-mailed.

Web Reports is a standard feature of Avotus Professional. Corporate Directory is an additional component of Web Reports that allows authorized users to view, edit and report on Corporate Directories.

Enhanced Call Accounting

The Enhanced Call Accounting option includes two powerful modules: Consolidated Cost Allocation and LDAP.

Consolidated Cost Allocation

Consolidated Cost Allocation offers third-party billing and costing. Avotus sorts, filters and reports on collected information. Users can assign imported costs to the appropriate chargeable entities within the organization to reflect a total picture of all costs. Consolidated Cost Allocation takes report data from chosen applications to generate one single, comprehensive report. Flexible import capabilities allow for integration of third party billing data. Importable data formats include ASCII, Excel, Access and any ODBC data source. The solution is not limited to management of telecom services - cost information can be entered or imported for various services. For example, keep track of third party costs such as cell phones and car leases.

LDAP

LDAP integration is also included in the Enhanced Call Accounting package. This module can synchronize with your corporate LDAP directory server to share directory information with all other LDAP-compliant systems and applications. With LDAP compliance, Avotus works even more effectively with your other critical business systems.

AVOTUS PROFESSIONAL BENEFITS

- reduced operating costs through identification of:
 - redundant services
 - need to up (or down) grade system
 - hardware-misuse/neglect of voice and data resources
- maximized ROI for voice and/or data communications solutions
- quick start up with simple, reliable implementation
- simple administration of cost allocation within organization/client billing

Company Information

Company Name:
Avotus Corporation

URL: www.avotus.com

Technical Support Email:
support@avotus.com

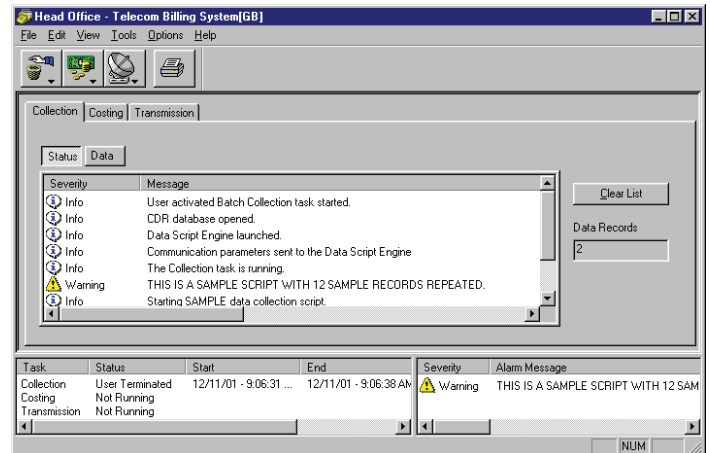
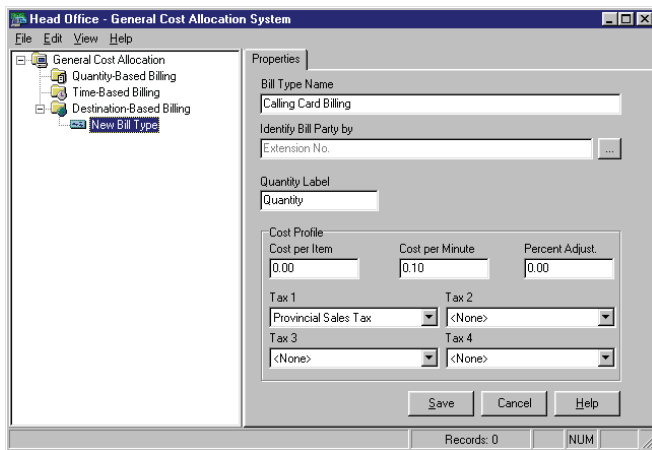
Technical Support Phone:
1-877-676-4250

Sales Contact Name:
Inside Sales Department

Sales Contact Phone:
1-866-542-3018

Sales Contact Email:
solutions@avotus.com

For all inquiries on this product, please provide the following reference code: NORTELDPP



Compatibility Information:

Avotus Professional release 3.18 was verified as compatible in a controlled laboratory environment. For complete compatibility details, including specific Nortel platforms and releases, please refer to the Certificates of Compatibility at:

www.nortel.com/prd/dpp/product/prodpages/z5692.html



www.nortel.com/compatible

Nortel, the Nortel logo, and the Globemark are trademarks of Nortel Networks. All other trademarks are the property of their owners.

Copyright © 2007 Nortel Networks. All rights reserved. Information in this document is subject to change without notice. Nortel assumes no responsibility for any errors that may appear in this document.