



# Nortel Enhances Wireless LAN Security with AirDefense Integration

Nortel enhances the 2300 series WLAN switch with the integration of the award-winning AirDefense Enterprise Wireless Intrusion Prevention System. Nortel wireless Access Points can be statically and/or dynamically converted into AirDefense wireless IPS sensors, enabling the 2300 WLAN switch to talk to the AirDefense Enterprise backend appliance.



**Leveraging the strengths of its Developer Partners and their Compatible Products, the Developer Program has become a key contributor in the success of Nortel by broadening its reach and responsiveness in meeting the needs of its channels and customers. Each Nortel Compatible Product has met established requirements for integration, functionality and stability, further reducing total cost of ownership.**

Nortel and AirDefense, the leader in wireless intrusion protection, have partnered to provide a tightly integrated intrusion detection and prevention solution, delivering the most comprehensive wireless security at the lowest total cost of ownership for organizations that require more than standard security. The benefits of integration include faster deployment, lower capital and operating costs, and dramatically simplified management.

## **Optimal IDS/IPS solution.**

The most elegant WLAN security option is to deploy a solution that pre-integrates the WLAN and the IDS/IPS, which is what Nortel and AirDefense have delivered. This solution integrates Nortel's WLAN and AirDefense's best-in-class IDS/IPS, delivering comprehensive intrusion protection capabilities while streamlining deployment and operation.

## **24/7 Continuous Monitoring**

With the integrated Nortel-AirDefense solution, you get always-on protection because you have a dedicated array of sensors and an IDS/IPS server integrated into your WLAN. This is in contrast to approaches that use access points as part-time monitors (through time-slicing methods), and therefore are vulnerable to attacks that can exploit momentary lapses in monitoring.

## **360-Degree Protection against Threats**

Enterprises face a long list of potential security threats, including denial of service attacks, evil twins, rogue devices, ad hoc networks, and many others. The Nortel-AirDefense solution provides protection against the full range of intrusion threats—more than 230 types of attacks—far more than any other vendor on the market. In addition, AirDefense is the only wireless IDS vendor that has received Common Criteria certification from the U.S. government's National Information Assurance Partnership (NIAP), a security requirement for Department of Defense wireless networks.

## **Comprehensive Forensic Analysis**

Forensic analysis enables organizations to analyze past activity. Not only does this allow you to investigate past incidents to identify what may have been compromised, but it also allows you to analyze and detect patterns and behaviors that can help improve ongoing security strategies. AirDefense leads the industry in comprehensive forensic analytics,

by capturing granular data for periods up to one year. No other vendor provides both the depth of forensic capabilities and the amount of data available to analyze.

### Auto configuration of APs into AirDefense IDS server.

The Nortel-AirDefense solution behaves in a synchronized fashion, automatically populating adds, moves, and changes between the WLAN and IDS/IPS. Without integration, each add, move, and change would have to be done twice—once in the WLAN management system and again in the IDS/IPS system. Auto configuration significantly reduces network administration burden.

### Auto roll-up of alarms in WLAN management console.

Intrusion alarms received by the AirDefense IPS server are sent to the Nortel WLAN Management System via SNMP trap messages. Intrusion alarms are rolled up in and correlated to provide a summary view for rapid analysis and corrective action. This degree of integration reduces operational costs and gives IT staff visibility into the entire network.

### User customizable integration.

Integration between Nortel and AirDefense is fully customizable. Administrators have extensive flexibility and control over integration behavior, such as how AirDefense alarms are rolled up in the Nortel WLAN Management System and the granularity of data presented in summary views.

### Common Hardware

The Nortel WLAN 2300 series access points and the AirDefense model 510 sensor share identical hardware, which means just one part to install, maintain, and stock. The hardware can run either a Nortel service image or an AirDefense sensor image. When the hardware is running an AirDefense image, it acts as a security sensor. When it is running a Nortel image, the hardware serves as a service access point. This flexibility of use not only lowers deployment costs but it also enables the unique "dynamic threat response" capability described below.

## Dynamic Threat Response

Dynamic threat response capability, available from the integrated solution, enables organizations to rapidly defend against threats in a highly cost effective and efficient manner. Access points can be quickly and easily converted to sensors to respond to an identified threat, and then converted back to access point service once the threat has been mitigated. This capability allows organizations to:

- Quickly locate the exact source of the threat and shut it down at the point of attack
- Defend against sophisticated attackers attempting to flood security sensors to launch parallel attacks
- Deploy far fewer sensors than required by a standalone IDS/IPS, resulting in lower capital expense.

## Company Information

Company Name:  
AirDefense

URL: [www.airdefense.net](http://www.airdefense.net)

Technical support email:  
[support@airdefense.net](mailto:support@airdefense.net)

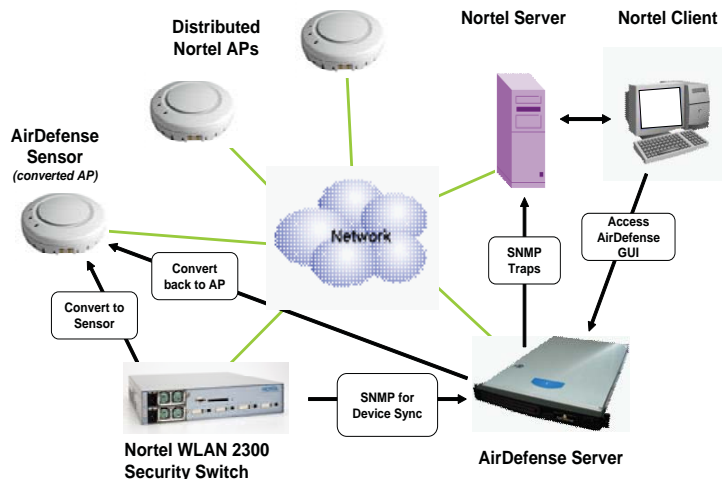
Technical support phone:  
(800) 913-1257 (North America)  
+1 306 791-5673 (EMEA)

Sales Contact (North America):  
Jeff Manning  
(508) 281-2285  
[jmanning@airdefense.net](mailto:jmanning@airdefense.net)

Sales Contact (EMEA):  
Anthony Perridge  
+44 1256 316180  
[emeasales@airdefense.net](mailto:emeasales@airdefense.net)

For all inquiries on this product, please provide the following reference code: AD-0307E

## AirDefense & Nortel Integrated Solution



### Compatibility Information:

AirDefense Enterprise Server Rel 7.0 was verified as compatible in a controlled laboratory environment. For complete compatibility details, including specific Nortel platforms and releases, please refer to the Certificates of Compatibility at:

[www.nortel.com/prd/dpp/product/prodpages/z6301.html](http://www.nortel.com/prd/dpp/product/prodpages/z6301.html)



### [www.nortel.com/compatible](http://www.nortel.com/compatible)

Nortel, the Nortel logo, and the Globemark are trademarks of Nortel Networks. All other trademarks are the property of their owners.

Copyright © 2007 Nortel Networks. All rights reserved. Information in this document is subject to change without notice. Nortel assumes no responsibility for any errors that may appear in this document.